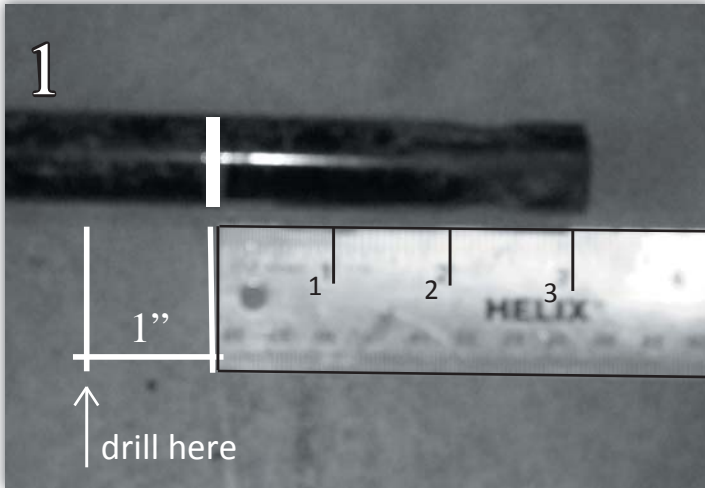
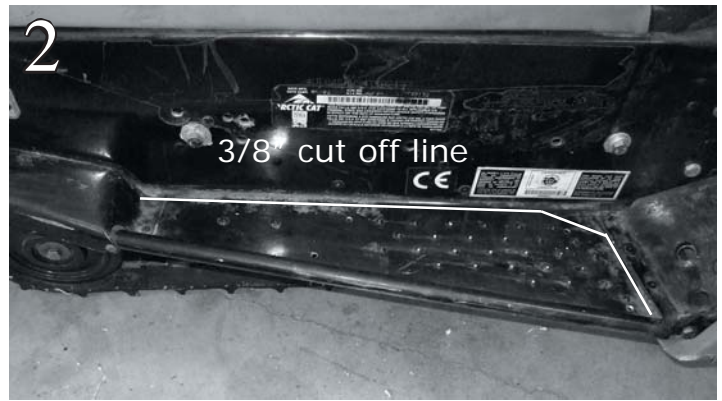


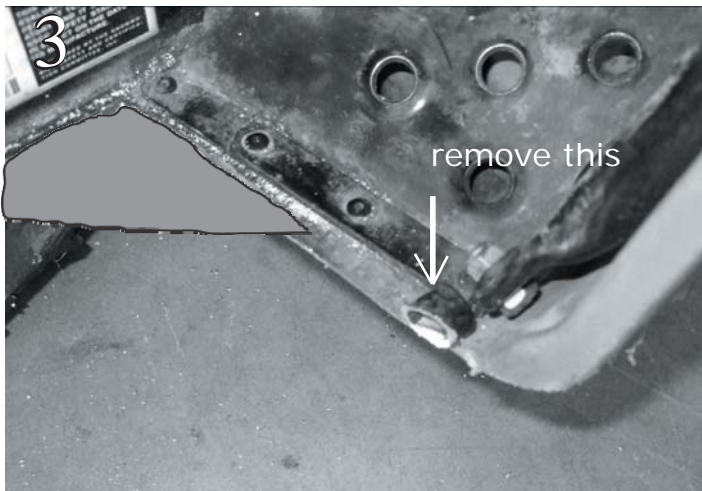
# ARCTIC CAT / YAMAHA 120 RUNNING BOARD INSTRUCTIONS



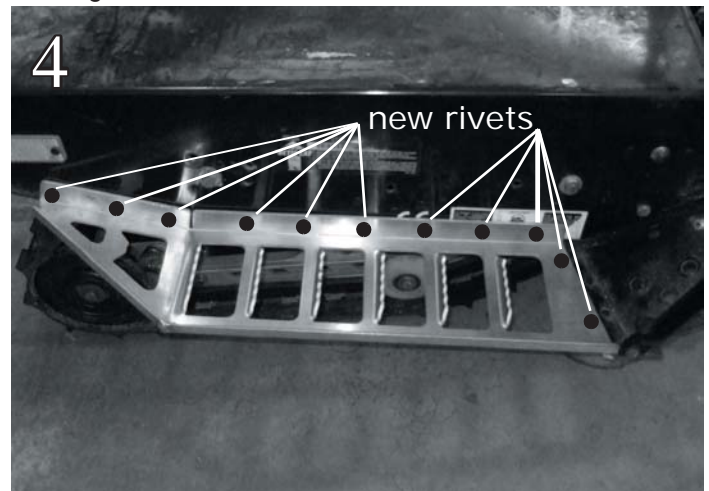
Remove rear bumper bolts with 7/16" wrench. Remove 3" from original bumper. Re-use rear most hole and drill new 1/4" hole 1" rearward of new cut on bumper.



Drill out 1/8" on rear shield. Note: There is one rivet that may need to be removed with a grinder to prevent rear suspension removal. Measure 3/8" out from tunnel on existing running board and 3/8" back from angled foot rest and mark a line. You should be marking just inside the dimples on the existing boards. Where the two lines meet, mark just inside the dimples and put a 45° angle line as noted on picture above (cut just inside of dimples on old running board). Cut off existing foot rest with saw or cutting wheel.



To allow for overlap of new Sled Treads, remove the forward rolled outer edge up to the edge of the angled foot rest, as noted on picture above.



Drill (2) 3/16" rivet holes in front of the new Sled Treads through the 3/8" lip left from the old running boards and secure with 2 rivets. Drill new holes in tunnel using Sled Treads as a guide. Rivet all holes using supplied rivets.

\*\*\*\*\*PLEASE NOTE\*\*\*\*\*

**This product is intended for closed-course racing only and is sold "as-is" without warranty. Manufacturer and distributor specifically disclaim all responsibility for consequential and incidental damages or any other losses arising from the use of this product. Any dispute arising out of the use of this product must be settled in Linn County, Iowa under Iowa law.**

\*\*\*\*\*