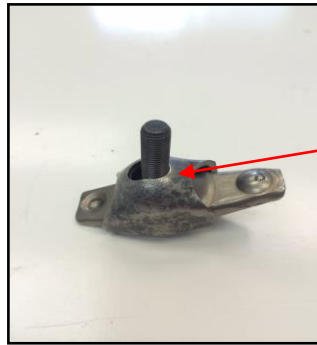


# WELDED ROCKER ARM INSTRUCTIONS

REVISED 8/14/14

BEFORE INSTALLING ROCKER ARMS CHECK FOR PROPER CLEARANCE BETWEEN THE ROCKER ARM AND THE VALVE SPRING RETAINER. WHEN USING A PERFORMANCE CAM MAKE SURE TO CHECK THAT THE ROCKER ARM SLOT DOES NOT CONTACT THE ROCKER STUD AT FULL VALVE LIFT.



CONTACT

\*\*\*\*\*PLEASE NOTE\*\*\*\*\*

**This product is intended for closed-course racing only and is sold “as-is” without warranty. Manufacturer and distributor specifically disclaim all responsibility for consequential and incidental damages or any other losses arising from the use of this product. Any dispute arising out of the use of this product must be settled in Linn County, Iowa under Iowa law.**

\*\*\*\*\*

# WELDED ROCKER ARM INSTRUCTIONS

REVISED 8/14/14

BEFORE INSTALLING ROCKER ARMS CHECK FOR PROPER CLEARANCE BETWEEN THE ROCKER ARM AND THE VALVE SPRING RETAINER. WHEN USING A PERFORMANCE CAM MAKE SURE TO CHECK THAT THE ROCKER ARM SLOT DOES NOT CONTACT THE ROCKER STUD AT FULL VALVE LIFT.



CONTACT

\*\*\*\*\*PLEASE NOTE\*\*\*\*\*

**This product is intended for closed-course racing only and is sold “as-is” without warranty. Manufacturer and distributor specifically disclaim all responsibility for consequential and incidental damages or any other losses arising from the use of this product. Any dispute arising out of the use of this product must be settled in Linn County, Iowa under Iowa law.**

\*\*\*\*\*