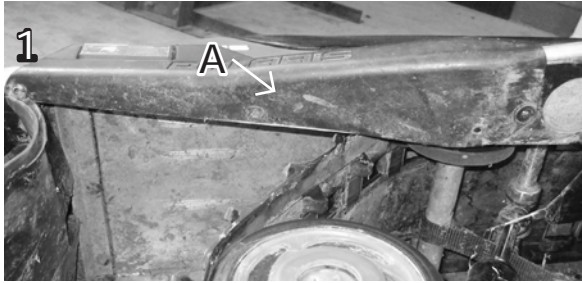
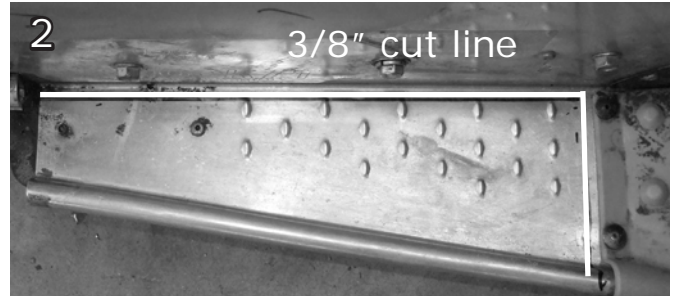


# POLARIS XC-120 RUNNING BOARD INSTRUCTIONS



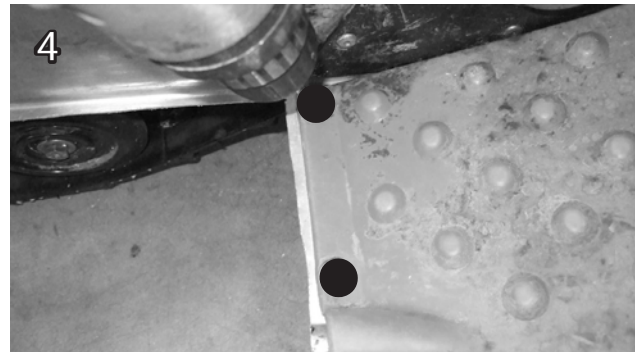
Remove 3 rivets under (A) and remove (1) T-20 torque screw from inside tunnel. Discard these pieces



Measure 3/8" out from tunnel on existing running board and 3/8" back from angled foot rest and mark a line. You should be marking just inside the dimples on the existing boards.



Note: On stock suspension – pry inward on torsion spring to prevent cutting spring. Cut off old running board with saw or cutoff wheel. You may need to grind slightly around bumper.



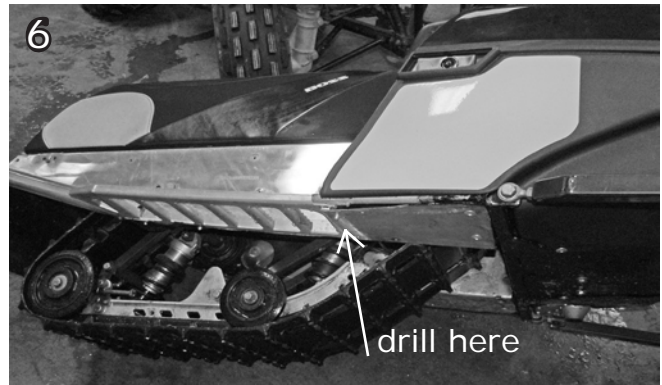
Drill out 2 rivets at bottom of plastic foot rest



Put new running boards into front rolled edge and sandwich the new Sled Treads between the plastic and the running boards. Make sure that the new running boards are pushed down against the 3/8" lip and are pushed fully down on the lip of the tunnel. Drill (2) 3/16" rivet holes in the front using existing holes as a guide, and secure with (2) large head rivets.

Drill (6) new 3/16 holes in tunnel using Sled Treads as a guide. Rivet these holes from the Sled Tread in toward tunnel with the 3/16" rivets supplied. Use a Vice Grip® or C-clamp to keep tight to tunnel. NOTE: You may need to drill and rivet at a slight angle due to interference with the Sled Tread.

Remove (2) rear suspension bolts and raise the rear of the sled to provide room to drill 3 holes at rear of sled treads. Drill from the inside of the tunnel outward through the tunnel and bumper, into the lip on the Sled Treads. Use the (3) #10 x 1 1/4" machine bolts supplied. Insert from the tunnel through the bumper and lip of the Sled Treads. Tighten nut. You may want to cut off excess bolt which sticks out.



Tip sled on side. Drill from bottom through the rolled lip into the finger of the front of the Sled Tread with a 3/16" bit and rivet with 1 rivet as noted in picture above.

Re-install rear suspension

\*\*\*\*\*PLEASE NOTE\*\*\*\*\*

**This product is intended for closed-course racing only and is sold "as-is" without warranty. Manufacturer and distributor specifically disclaim all responsibility for consequential and incidental damages or any other losses arising from the use of this product. Any dispute arising out of the use of this product must be settled in Linn County, Iowa under Iowa law.**

\*\*\*\*\*