

MINI Z / MINI REV SKIDOO CLUTCH INSTRUCTIONS

REVISED 7/30/14

(IF YOU ARE INSTALLING THE CLUTCH ONLY DO NOT USE STEPS 2, 5, & 8)

1. REMOVE DRIVE CHAIN.
2. REMOVE REAR DRIVE SPROCKET (NOTE: FOOT REST WILL HAVE TO BE REMOVED BY DRILLING OUT THE POP RIVETS HOLDING IT IN PLACE), THIS WILL ALLOW ROOM TO SLIDE SPROCKET OFF SHAFT.
3. REMOVE BRAKE BAND FROM DRIVE CLUTCH BY LOOSENING THE SET SCREW ON BRAKE CABLE CLAMP AND NUT HOLDING BRAKE BAND TO BRACKET.
4. REMOVE DRIVE CLUTCH BY LOOSENING CENTER BOLT AND SLIDING CLUTCH OFF SHAFT. SAVE CENTER BOLT, THICK CENTER WASHER, AND ALUMINUM SPACER BEHIND CLUTCH. THEY WILL BE REUSED.
5. LEAVE PLASTIC CHAIN TENSIONER IN PLACE.

5A. THE GRC-35 CLUTCH WILL USE THE STOCK BRAKE BAND AND CRANKSHAFT SPACER BE SURE TO CHECK CHAIN FOR PROPER ALIGNMENT AFTER INSTALLING. IF CHAIN ALIGNMENT IS OFF USE SUPPLIED WASHERS BEHIND CLUTCH TO ALIGN.

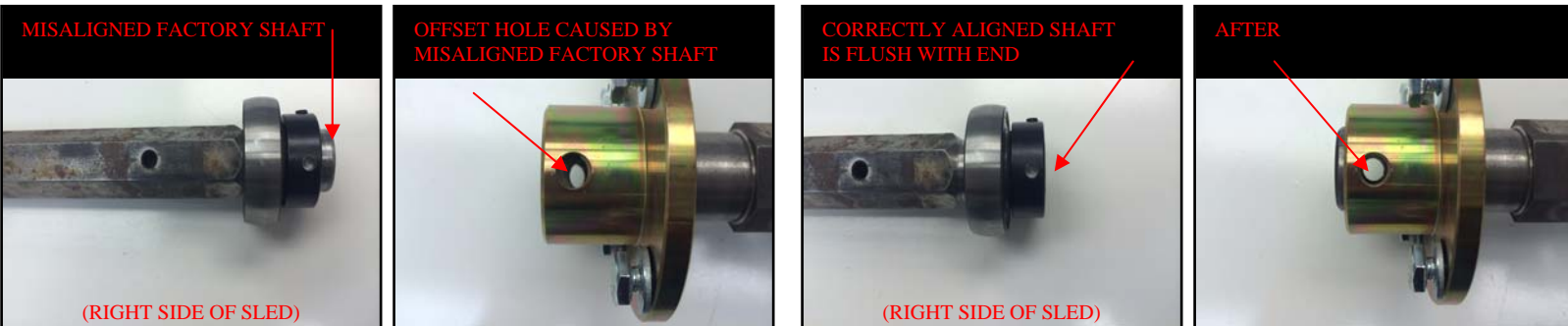
5B. ALL HILLIARD CLUTCHES (DOMINATOR, FLURRY, BLIZZARD) WILL USE THE STOCK BRAKE BAND AND CRANKSHAFT SPACER BE SURE TO CHECK CHAIN FOR PROPER ALIGNMENT AFTER INSTALLING. IF CHAIN ALIGNMENT IS OFF, USE SUPPLIED WASHERS BEHIND CLUTCH TO ALIGN.

IMPORTANT: AFTER INSTALLING THE CLUTCH MOUNTING BOLT YOU NEED TO MAKE SURE TO CHECK THAT THE CLUTCH DRUM SPINS FREELY ON THE BUSHING. SEE RECTECH VIDEO ON OUR WEBSITE FOR PROPER INSTALLATION.

6. INSTALL NEW BRAKE BAND AROUND CLUTCH, ASSEMBLING IN THE REVERSE ORDER OF REMOVAL INSTRUCTION # 3 **IMPORTANT: MAKE SURE BRAKE IS IN PLACE AND PROPERLY ADJUSTED BEFORE TEST DRIVING SLED.**

7. INSTALL SPROCKET ON THE OUTER SIDE OF HUB.

8. DRIVE CHAIN YOU MAY HAVE TO REMOVE LINKS DEPENDING ON SPROCKET SIZE (NOTE: MAKE SURE TO LOOSEN AND SLIDE ENGINE ALL THE BACK BEFORE REMOVING LINKS, INSTALL CHAIN AND TIGHTEN TO PROPER TENSION.



ON SOME SLEDS, THE HUB MOUNTING BOLT HOLE WILL BE MISALIGNED. THIS IS DUE TO THE DRIVE SHAFT BEING MISALIGNED AT FACTORY. TO CORRECT, SEE PICTURES ABOVE.

REC TECH VIDEO IS AVAILABLE AT WWW.RECMOTOR.COM ON THE INSTALLATION OF THIS PRODUCT. TECH LINE (319) 462-6932 MONDAY 8 AM TO 5PM, TUESDAY AND WEDNESDAY 8 AM TO NOON CST.

*****PLEASE NOTE*****

This product is intended for closed-course racing only and is sold “as-is” without warranty. Manufacturer and distributor specifically disclaim all responsibility for consequential and incidental damages or any other losses arising from the use of this product. Any dispute arising out of the use of this product must be settled in Linn County, Iowa under Iowa law.
