

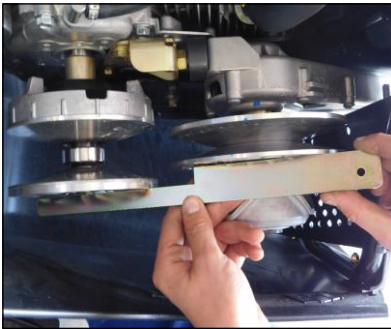
CLT 200 CLUTCH ALIGNMENT TOOL

PART # CLT
(Revised 9/21/20)

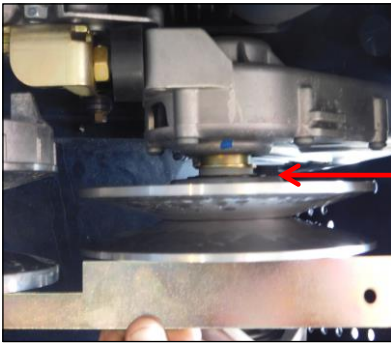
IT'S SIMPLE



Clutch out of alignment
(SLOW SLED)



Remove drive belt and Secondary
clutch bolt. Set tool next to clutch.



Add supplied Nylon shims on shaft
to achieve proper alignment.
Tighten secondary clutch bolt.



Clutch aligned proper
(FAST SLED)

*****PLEASE NOTE*****

This product is intended for closed-course racing only and is sold "as-is" without warranty. Manufacturer and distributor specifically disclaim all responsibility for consequential and incidental damages or any other losses arising from the use of this product. Any dispute arising out of the use of this product must be settled in Linn County, Iowa under Iowa law.
